

March 29, 2024

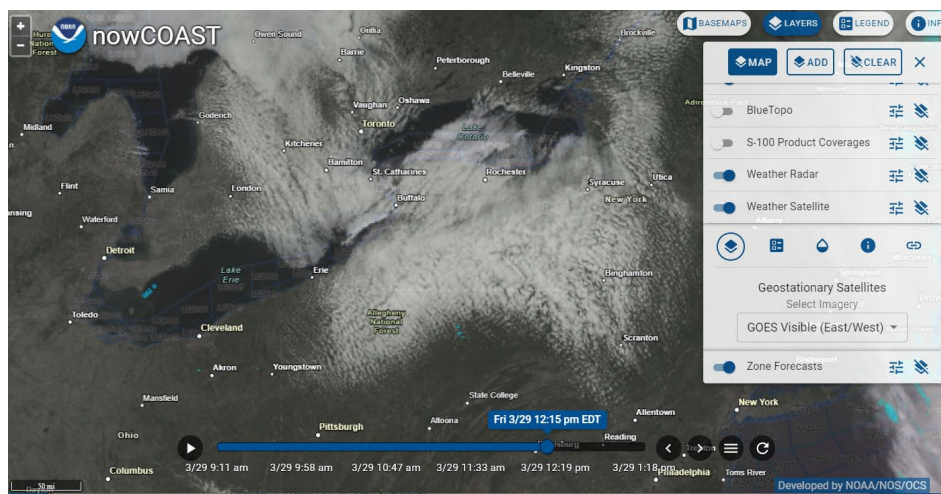
Announcing the implementation of nowCOAST V6.5.0

NOAA's nowCOAST (<https://nowcoast.noaa.gov>) Version 6.5.0 released today. The new version restores the time enabled OGC compliant Web Map Service (WMS) for NOAA/National Environmental Satellite, Data and Information Service's GOES East/West Imagery Mosaics.

The GOES East/West layers in nowCOAST's weather satellite WMS includes the following products:

- 'Red' Visible - Band 2 (0.64 μm), 5-min update frequency, 0.3 miles (0.5 km) spatial resolution
- Shortwave Infrared - Band 7 (3.9 μm), 5-min update frequency, 1.2 miles (2 km) spatial resolution
- Longwave Infrared - Band 14 (11.2 μm), 5-min update frequency, 1.2 miles (2 km) spatial resolution
- Snow/Ice - Band 5 (1.61 μm), 5-min update frequency, 0.6 miles (1 km) spatial resolution
- Upper-Level Water Vapor Band 8 (6.2 μm), 5-min update frequency, 1.2 miles (2 km) spatial resolution.

Users can display the GOES East/West mosaics on the nowCOAST map viewer by selecting the *Weather Satellite* menu item and then choosing one of the five GOES mosaics in addition to the existing GMGSI products from the dropdown menu. Please note that the default weather satellite imagery will now be a GOES East/West mosaic instead of the NESDIS Global Mosaic of Geostationary Satellite Imagery (GMGSI) due to the high spatial and temporal resolutions of the GOES imagery over OCONUS.



GOES Visible Imagery focused on Lakes Erie and Ontario at 12:15 PM EDT March 29, 2024

Access to nowCOAST OGC Map Service (WMS):

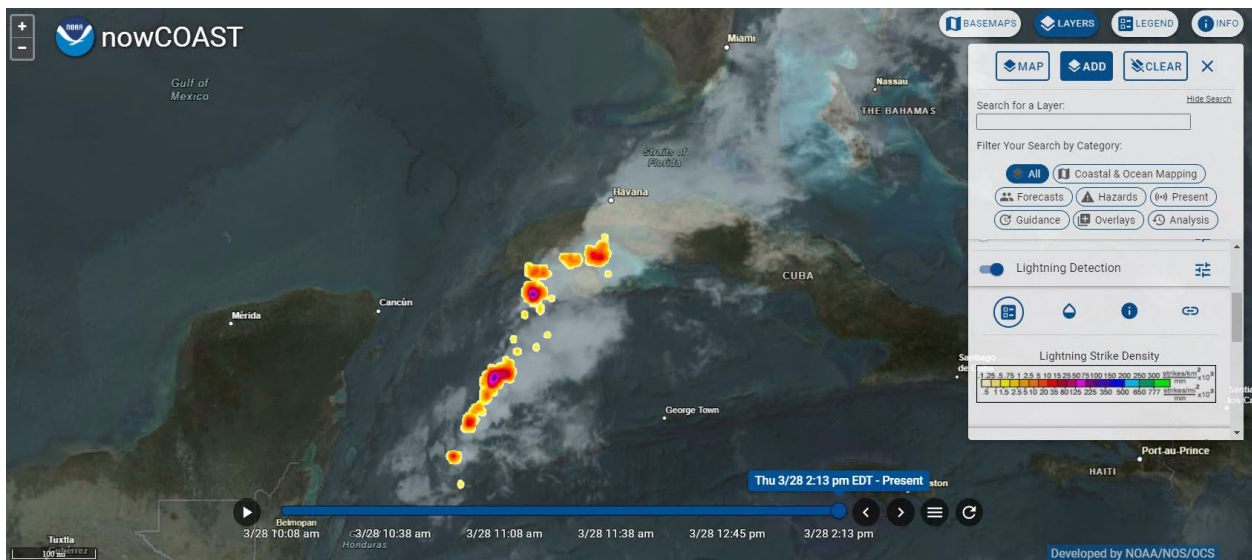
<https://nowcoast.noaa.gov/geoserver/observations/satellite/ows?SERVICE=WMS&VERSION=1.3.0&REQUEST=GetCapabilities>

The new version also restores, the OGC WMS, 15-minute ground-based network Lightning Strike Density Data made available by the National Weather Service's Ocean Prediction Center. The horizontal resolution of the data is 5 x 5 miles (8 x 8 km) and covers an area from the western South Pacific to the north of Scotland.

Access to nowCOAST OGC Map Service (WMS):

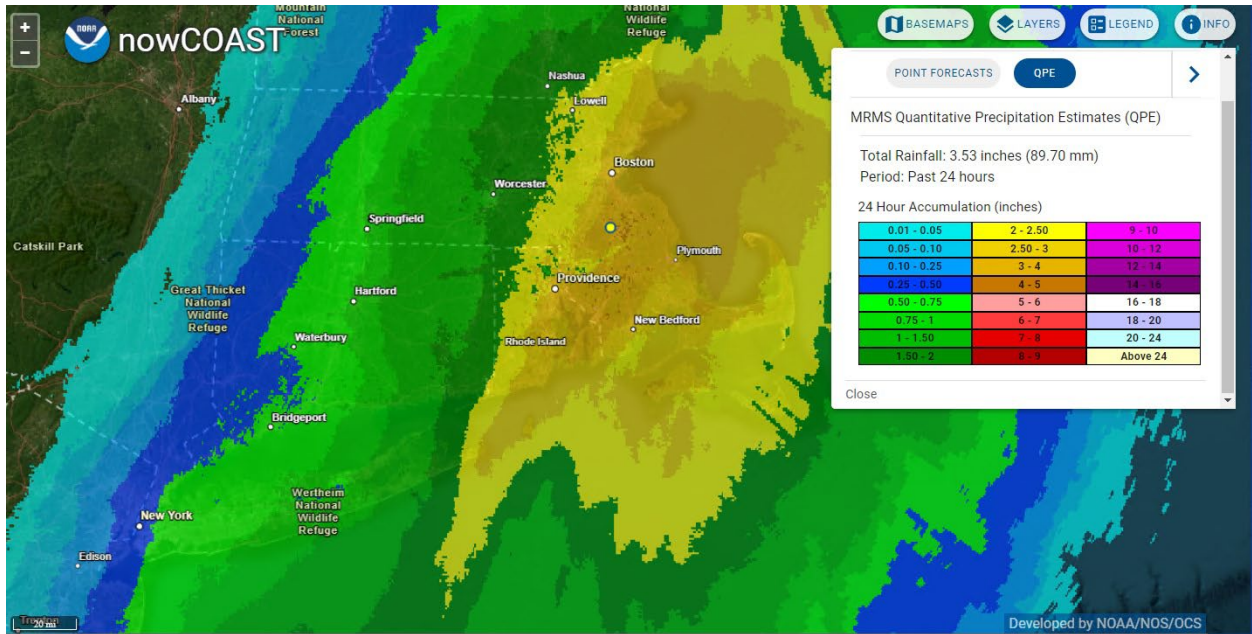
https://nowcoast.noaa.gov/geoserver/observations/lightning_detection/ows?SERVICE=WMS&VERSION=1.3.0&REQUEST=GetCapabilities

Users can display the Lightning Strike Density Data on the map viewer by selecting the *Add* button to access additional menu items and then toggling on the *Lightning Detection* menu item.

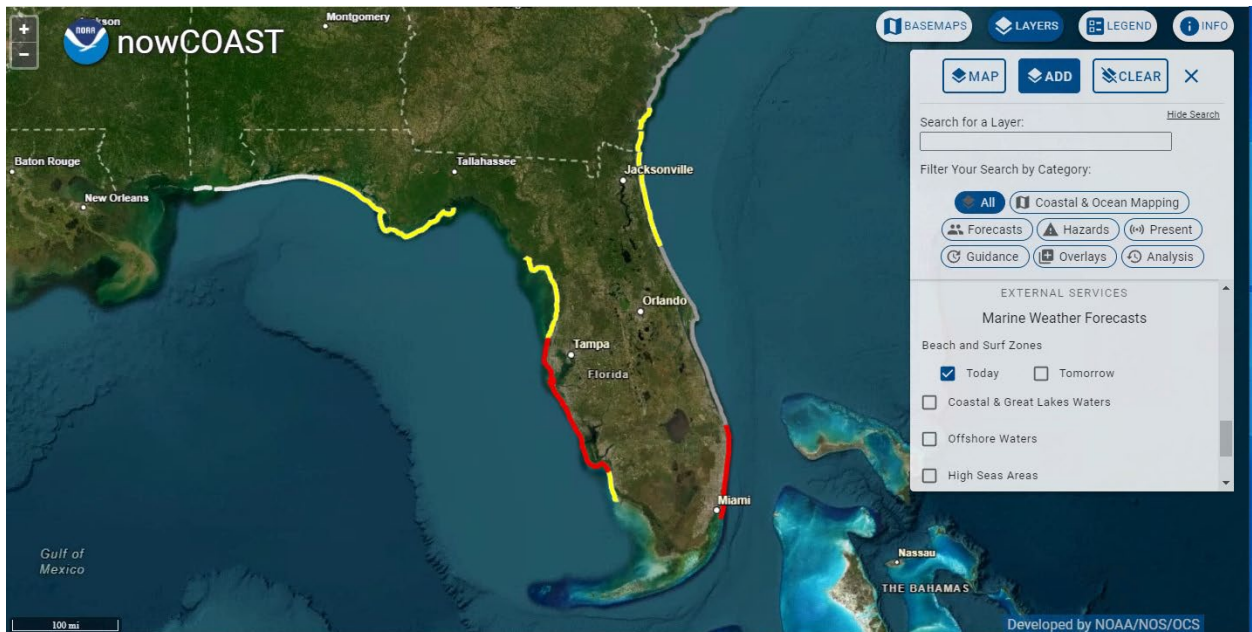


15 Minute Lightning Strike Density Data overlaid on GOES Longwave Infrared Imagery for the Yucatan Basin Region at 2:13 PM EDT March 28, 2024

In addition, we have added the following NWS Cloud GIS services to the nowCOAST map viewer allowing users to once again display the NWS-NSSL Multi-Radar Multi-Sensor (MRMS) quantitative precipitation estimate mosaics for 1-, 3-, 6-, 12-, 24-, 48-, and 72-hr time periods and the latest NWS Beach and Surf Zone Forecasts including Rip Current Risk Levels. Users can display the QPEs by selecting the *Add* button to access additional menu items and then toggling on the *Precipitation Amounts* menu item. To display the Beach and Surf Zone Forecasts, expand the *Zone Forecasts* menu item.



NWS–NSSL MRMS Radar-Only QPE for the Past 24-Hours over Southern New England



NWS Beach/Surf Zone Forecast including Rip Current/Swim Risk Levels for Florida valid Today, March 29, 2024

Access to NWS ArcGIS REST Services:

https://mapservices.weather.noaa.gov/vector/rest/services/outlooks/marine_beachforecast_summary/MapServer

https://mapservices.weather.noaa.gov/raster/rest/services/obs/mrms_qpe/ImageServer